



# Centre for Language and Communication Studies

ANNA VÄRE

HEAD OF ACADEMIC AND STUDENT AFFAIRS

(KIEVI@UTU.FI)



# CeLCS

- ▶ What is CeLCS
- ▶ Language studies for international students
- ▶ Enrolment for courses
- ▶ Other ways to study languages
  - ▶ Language Tandem
  - ▶ Language Partner
  - ▶ Language Circles
  - ▶ Language Tutoring



# Centre for Language and Communication Studies

An autonomous institution in University of Turku, offers teaching for all Faculties

14 000 students per year, 11 different languages!

Obligatory faculty-specific courses for degree students

Optional language courses for all students

# Contact information



Email and phone

[kievi@utu.fi](mailto:kievi@utu.fi)

+358 450 29 2018



Location

Agora building, 2nd  
floor



Languages

[Course offer  
webpage](#)

# Language studies at CeLCS

- ▶ Chinese
  - ▶ English
  - ▶ Finnish as a Foreign language
  - ▶ French
  - ▶ German
  - ▶ Italian
  - ▶ Japanese
  - ▶ Korean
  - ▶ Spanish
  - ▶ Swedish
  - ▶ Russian
- ▶ **Different levels (A1-C1):** beginners', continuation and more advanced courses.
  - ▶ **Language of tuition:** Some courses are taught in **English**, some in **Finnish** and some in the **target language**



# English language courses



List of courses in the [Study guide](#)



Faculty-specific courses are not available for exchange students!



Degree students have priority for many courses, but if there is enough room, exchange students are welcome too



In Business English (TSE) there are still some available courses in spring 2024 (EN4, EN5, EN7, EN11, EN14)



Check also these courses: **KIEN2901 English for Multidisciplinary Teams** and **KIEN0012 English Refresher Online**

# Finnish as a Foreign Language

- ▶ Finnish Survival Course for Exchange Students 2  
ects
  - ▶ Groups 5 and 6 in spring semester
- or
- ▶ Finnish Beginners' Course I 4 ects
  - ▶ Group 1 (Priority for degree students)

More information later when you meet the  
Finnish language teachers!



# Enrolment to courses

- ▶ Enrolment for all courses is done in Peppi system.
- ▶ Check the enrolment period from the course description.
- ▶ **There are different selection systems for courses, students are often selected by lottery if the course is too full.**
- ▶ No course fees.



Find information about the courses in the [Study Guide](#)

Course descriptions, teaching times, enrolment time, teachers' names etc.

# Other ways to study languages



Language and culture tandem



Language partner



Language tutoring



Language circles

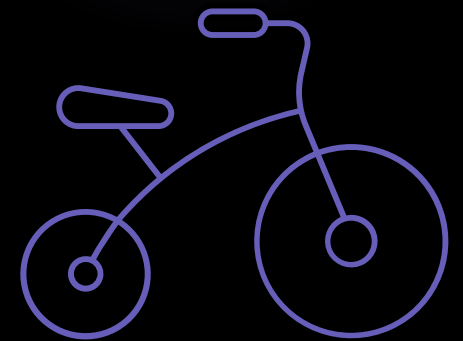


# Language and Culture

## Tandem 2 ECTS

### What is a Tandem?

- Students work in pairs and teach their own native language to each other.
- The other target language is always **Finnish** and your native language must be **Chinese, English, French, German, Italian, Russian, Spanish or Ukrainian**.
- Find the enrolment link in the [course description](#)
- **Enrolment deadline 14 January**





# Language Tutors

- ▶ Language tutors are assistants in a language course
- ▶ The tutors come to the language courses and tell about their home country and culture, help students with pronunciation, conversation practice etc.
- Language tutors help students with their language learning.
- Small payment for the tutoring hours (12€/h)
- Tutors for **German** and **Russian** in spring 2024  
More info will be sent by email.

# Тьюторы и ассистенты преподавателя русского языка весенний семестр 2024

Вас интересует заниматься русским языком с финскими студентами, изучающими русский в Учебном центре языков и коммуникации (Kievi)? Если да, напишите мне, пожалуйста, по электронной почте до 10-ого января 2024 г. Расскажите (на русском) о себе, о своей учёбе и о том, почему Вы хотели бы работать у нас тьютором или ассистентом преподавателя. Тьютор занимается со студентами самостоятельно; со студентами первого курса в весеннем семестре идёт разговорная практика и со студентами второго курса проверка сочинений. А ассистент преподавателя, в свою очередь, работает вместе с преподавателем на занятиях третьего курса: например разговаривает со студентами, делает маленькие презентации и проверяет сочинения студентов.

Биргитта Тюрин-Муранен  
Лектор русского языка  
Учебный центр языков и коммуникации, Agora  
Университет г. Турку  
Электронная почта: [btjurin@utu.fi](mailto:btjurin@utu.fi)

Hallo, liebe deutschsprachige Austauschstudenten und –studentinnen!

Im Fachbereich Deutsch des Zentrums für Sprachen und Kommunikationsstudien (Kievi) suchen wir jedes Semester Muttersprachler, die als Tutor/in bzw. Hilfslehrer/in arbeiten möchten. Zu den Aufgaben gehören bspw. das Präsentieren von bestimmten Themen im Sprachkurs, die Betreuung der Studierenden im Selbststudium, freie Gespräche und unterschiedliche Übungen (Aussprache, Grammatik, Schreiben).

Wenn du Interesse hast, als Tutor/in zu arbeiten, dann bewirb dich bitte per E-Mail bis zum 10.01.2024. Sende mir ein Motivationsschreiben in deutscher Sprache, in dem du dich kurz vorstellst (Studium, Unterrichtserfahrung) und näher begründest, warum du als Tutor/in arbeiten möchtest. Bitte teile mir ebenfalls mit, wie lange du in Turku bleibst.

Herzlich willkommen an der Uni Turku und bis bald!

Alexandra Virtanen ([alevir@utu.fi](mailto:alevir@utu.fi))



# Language Circles

- ▶ Language circle is a voluntary, free time activity carried out by international and Finnish students and staff.
- ▶ No study credits, no assignments.
- ▶ Groups are available in different languages, and the idea is to use that specific language in the group.
- ▶ The groups will have a kick-off meeting on **Thursday 18 January at 4 pm, in Agora building.**
- ▶ More information will be sent by email.
- ▶ Moodle: [Kurssi: Language Circles - Kielipiirit | Moodle v.4.1 \(utu.fi\)](#)

# Language partner

- ▶ Find a student with whom you can practice your language skills, or offer to teach someone your native language.
- ▶ Good option if you don't want to take a course or if you want to study some other language than Finnish,
- ▶ Possibility to find a language partner and practice your language skills without any academic objectives.
- ▶ [Check the instructions and sign in to Moodle](#)

# Kiitos!

- ▶ [kievi@utu.fi](mailto:kievi@utu.fi)
- ▶ [anna.vare@utu.fi](mailto:anna.vare@utu.fi)
- ▶ [CeLCS webpage](#)
- ▶ Instagram: utukievi