

Incoming student mobility

Kaija Kangasjärvi & Lassi Yli-Muilu



**Multidisciplinary.
International.
Research university.**

TURUN YLIOPISTO
VAPAAKANSAN LAHJA
VAPAALLE TIETEELLE

100

**YEARS IN
2020**

Founded in 1920 by
the initiative of the
Finnish people with
the support of 22,040
donors.

1st

**FINNISH-
LANGUAGE
UNIVERSITY**

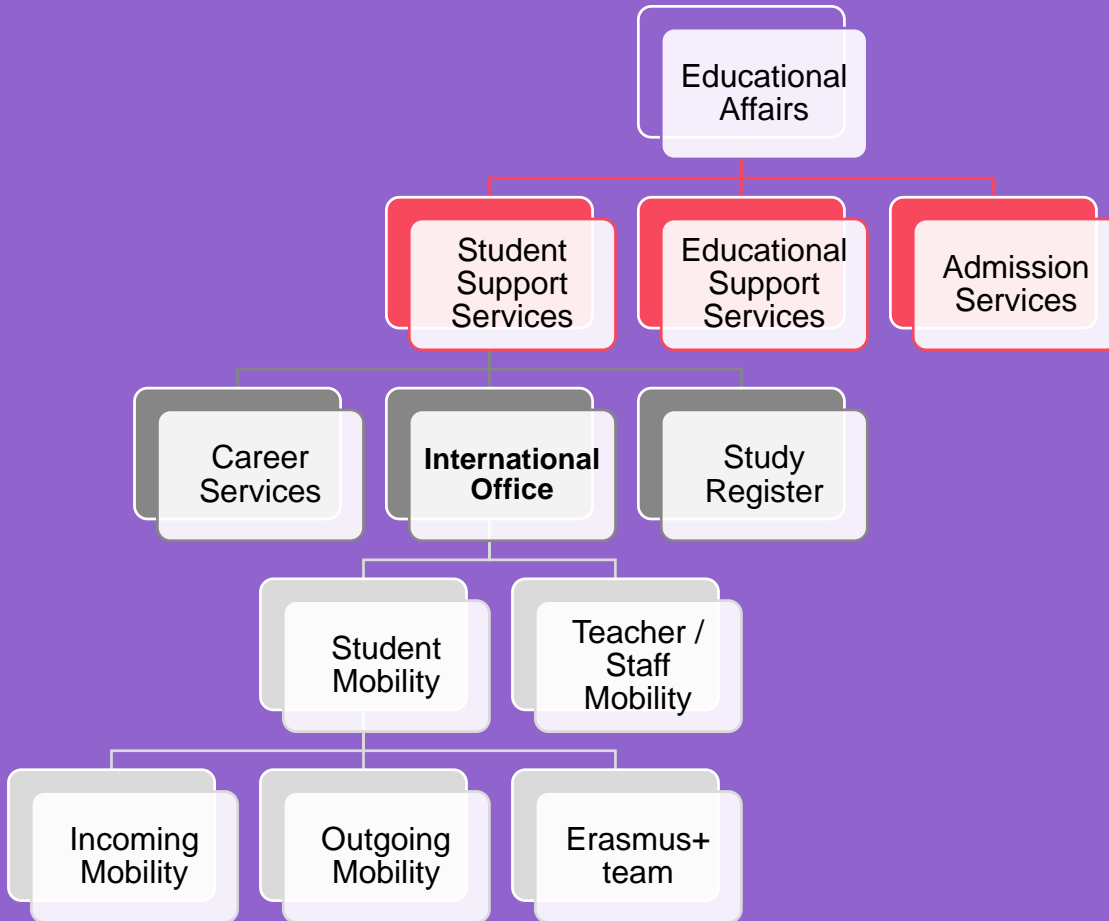
“From a free people
to free science”



**ACADEMIC
HERITAGE IN
TURKU SINCE 1640**

The first university in
Finland, the Royal
Academy of Turku,
operated in the city
1640–1828.


Organisational chart



Engagement and Impact Unit:
Strategic partnerships and
international relations



The Faculties of Humanities and Social Sciences and Turku School of Economics the most popular among incoming exchange students.

An aerial photograph of a city in winter, with snow covering the ground and rooftops. The sun is low on the horizon, creating a warm, golden glow over the city. The city is densely packed with buildings, and there are many trees without leaves. The sky is filled with soft, white clouds. The overall scene is peaceful and scenic.

Campuses in the cities of Turku, Rauma and Pori

The University has premises and research stations all over Finland – from the Finnish Archipelago Sea to Kevo at Utsjoki, Lapland.

- The University of Turku is a popular destination for exchange, Master's degree and doctoral studies.
- We collaborate with over 400 universities worldwide and offer our students a wide selection of courses and programmes taught in English.

See our partner universities [here](#)!

- > utu.fi/masters
- > utu.fi/study
- > utu.fi/exchange

95%

**OF INTERNATIONAL
STUDENTS CHOSE
US DUE TO HIGH-
QUALITY
RESEARCH**

2018

20,185

**STUDENTS
FROM OVER 100
COUNTRIES**

452

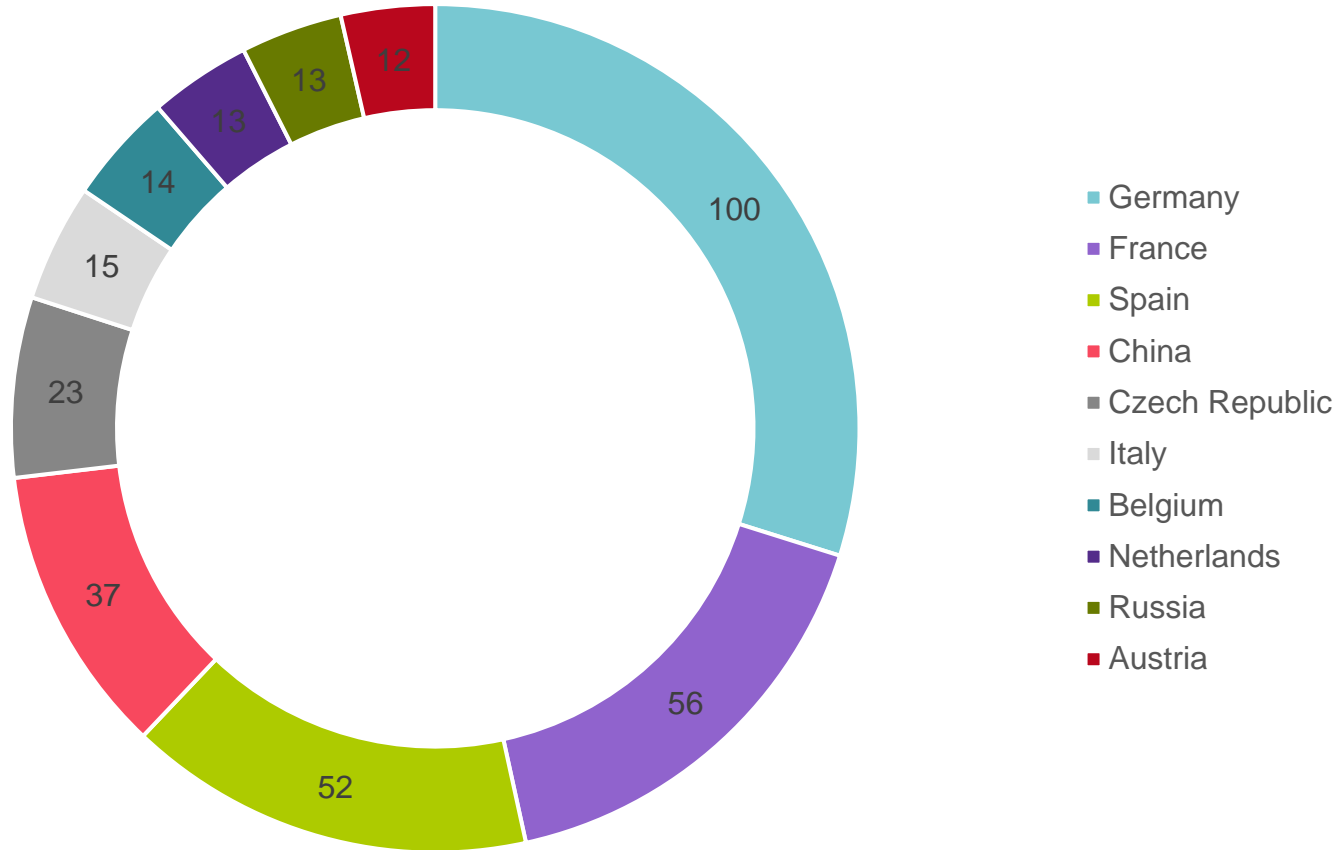
**INCOMING
EXCHANGE
STUDENTS**

530

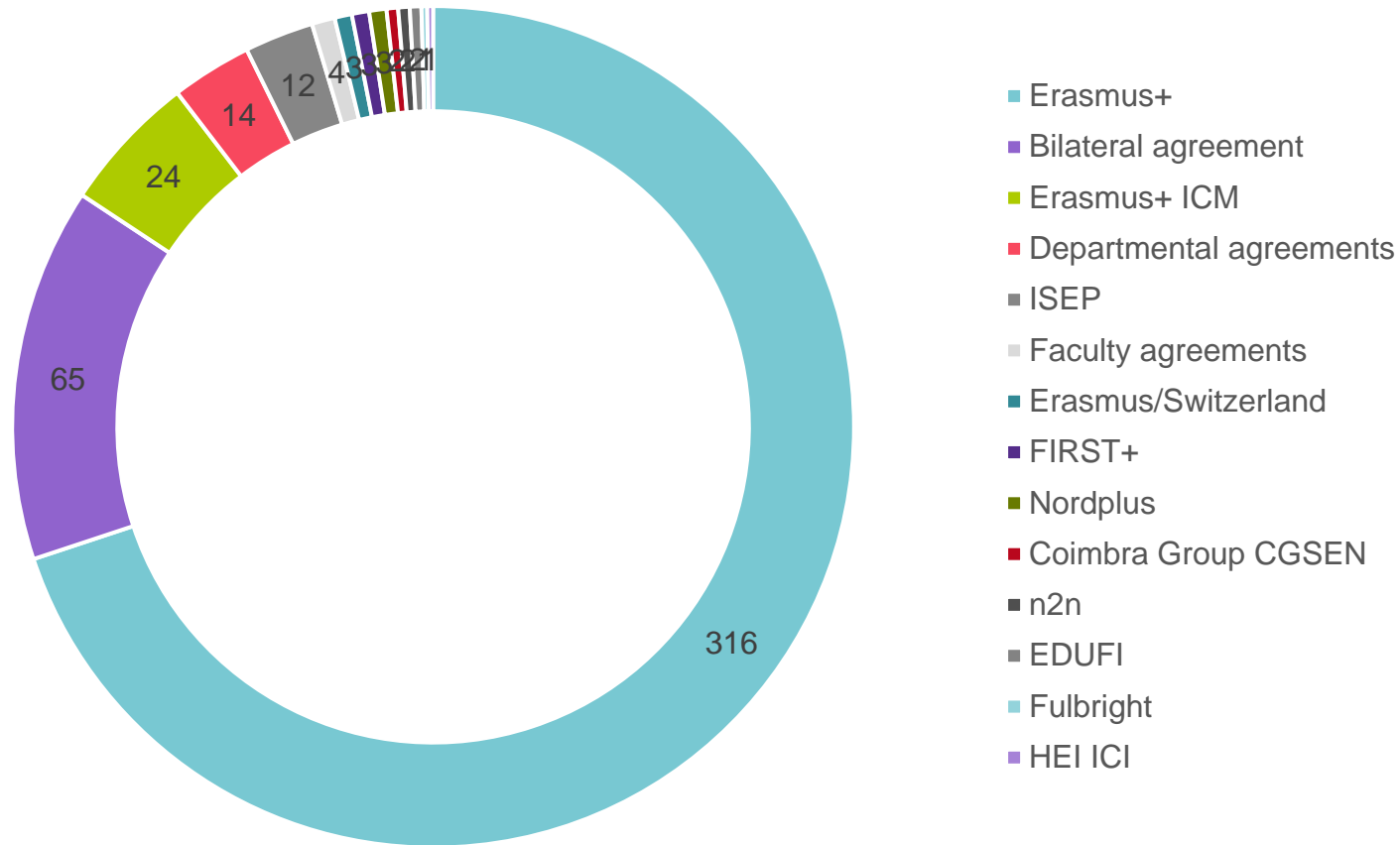
**OUTGOING
EXCHANGE
STUDENTS**

1664 international students at UTU in 2018.

Incoming student mobility in 2018 by country



Incoming student mobility in 2018 by exchange programme



Application process

- Partners submit nominations online in SoleMOVE.
- Each applicant gets an individual user ID and personal link to the application programme.
- Students submit the application online by due date along with the required enclosures ([Transcript of Records](#), [Language Certificate](#) and [Learning Agreement](#)).
- Applicants receive their admission certificates by email once the application has been processed.

Application deadlines

- **Autumn Semester / Academic Year admissions**

- Application period starts on 15 March
- Application deadline
 - 15 April for non-EU/EEA applicants
 - 30 April for EU/EEA applicants

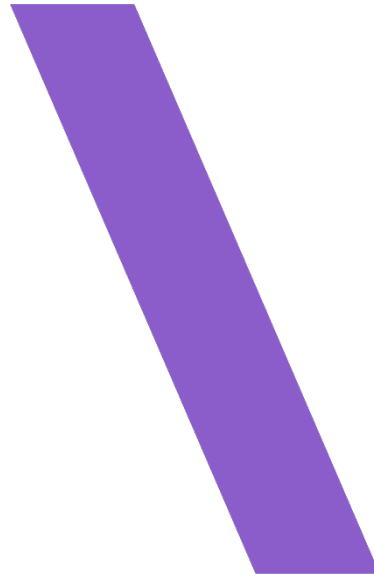
- **Spring Semester admissions**

- Application period starts on 15 September
- Application deadline
 - 15 October for non-EU/EEA applicants
 - 31 October for EU/EEA applicants

Courses for exchange students

- Each faculty offers a selection of courses in English.
- Most courses in English offered on MA level, some fields offer also BA level studies in English.
- The Centre for Language and Communication Studies – courses are open to all exchange students
- Possibility to take courses across faculty borders (with some limitations)
- Possibility to take courses at Åbo Akademi University
- Some of the incoming students study at the University Consortium of Pori.

The Study Guide



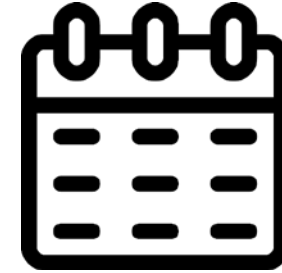
<http://studyguide.utu.fi>

→ Courses for exchange students

More detailed information [here](#).

Academic calendar

- Academic year 1 Aug – 31 Jul
- **Autumn Semester**
 - 1 Sept – 31 Dec
- **Spring Semester**
 - 1 Jan – 31 May
- Periods I & II in the autumn and period III & IV in the spring



Credit and Grading System

1 ECTS credit = 1 opintopiste (op) = 27 hours of work

Different modes of study

Assessments			
Finnish Grading Scale	Qualitative Definition	ECTS Grades	US Grades
5	Excellent	A	A+
4	Very Good	B	A
3	Good	C	B
2	Satisfactory	D	C
1	Sufficient	E	D
0	Fail	F/FX	xF

Support services for exchange students

- Student tutors
- Orientation
- Academic contact persons
- International Office / Student Centre Disco
- Student Union
- Extensive Language Centre services
- Well-equipped libraries
- IT services
- CampusSport
- Benefits with a student card:
 - Student Health Service
 - Subsidised student lunches
 - discounts on trains and buses

Tutors

- Offer practical help to exchange students during the start of their studies
- Apply in February (about 60-80 tutors/year)
- Selection and training by the International Office during the spring
- Usually small groups of 3-5 exchange students led by one tutor
- Compensation 30 €/exchange student, Certificate, ECTS credits
- Language skills, work experience, new friends, problem-solving skills

Orientation for international students

- We arrange an orientation twice a year for incoming international students
- **Autumn Semester**
 - End of August for exchange and Master degree students
- **Spring Semester**
 - Beginning of January for exchange students
- More information and the programme available [here](#).

Student Centre Disco

- Centralised services to all UTU students
- For exchange students
 - Registration to UTU upon arrival
 - Letter of Confirmation and Transcript of Records upon departure

Electronic examinations

- Many departments offer a possibility to take electronic exams in e-exam rooms, which you can access with an activated student card, key card or a printing tag.
- Becoming more and more commonplace at UTU
- More flexibility for the student
- Possible also during evenings and weekends, during the time frame set by the teacher

Welcome to the Student City of Turku



- Turku, located in the Southwest Finland and founded in 1229, is the oldest city in Finland. Turku is compact in size, perfect for exploring the exciting mixture of old and new.
- Turku offers the best quality of life with reasonable living costs, many housing options, active academic community, vivid cultural life, and a variety of outdoor activities.

- > studyinturku.fi
- > visitturku.fi/en

40,000

**STUDENTS IN
HIGHER
EDUCATION**



A photograph of two young women sitting on a black metal bench on a cobblestone path. The woman on the left has short white hair and is wearing a black jacket over a teal shirt. The woman on the right has long red hair and is wearing a grey t-shirt and purple pants with patches. A red backpack is on the ground next to the bench. In the background, there is a yellow bus on a bridge over a river, with trees and a stone wall visible. The scene is outdoors and appears to be in a city center.

Compact campus in the city centre

The Turku campus is located near the city centre and Aura River and close to other higher education institutions, businesses at Science Park, and the University Hospital. Also at Pori and Rauma, the campus is situated in the city centre.



**UNIVERSITY
OF TURKU**