

# Research and Innovation Support

@University of Turku

Mari Riipinen, Head of Unit, Research Development



UNIVERSITY  
OF TURKU

---

# 100

**YEARS IN  
2020**

Founded in 1920 by  
the initiative of the  
Finnish people with  
the support of 22,040  
donors.

---

# 1<sup>st</sup>

**FINNISH-  
LANGUAGE  
UNIVERSITY**

“From a free people  
to free science”



**ACADEMIC  
HERITAGE IN  
TURKU SINCE 1640**

The first university in  
Finland, the Royal  
Academy of Turku,  
operated in the city  
1640–1828.

# FACTS & FIGURES 2018

**20,000**

STUDENTS  
FROM OVER 100  
COUNTRIES

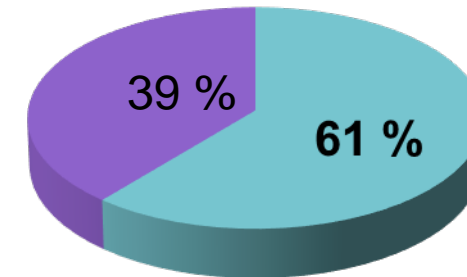
**3,500**

EXPERTS IN  
THE ACADEMIC  
COMMUNITY

## Innovations from research

The preventive effect of xylitol on teeth decay was first discovered at the Institute of Dentistry of the University of Turku. Each year, over a hundred different innovations and dozens of invention disclosures originate from the research conducted at the University.

## FUNDING

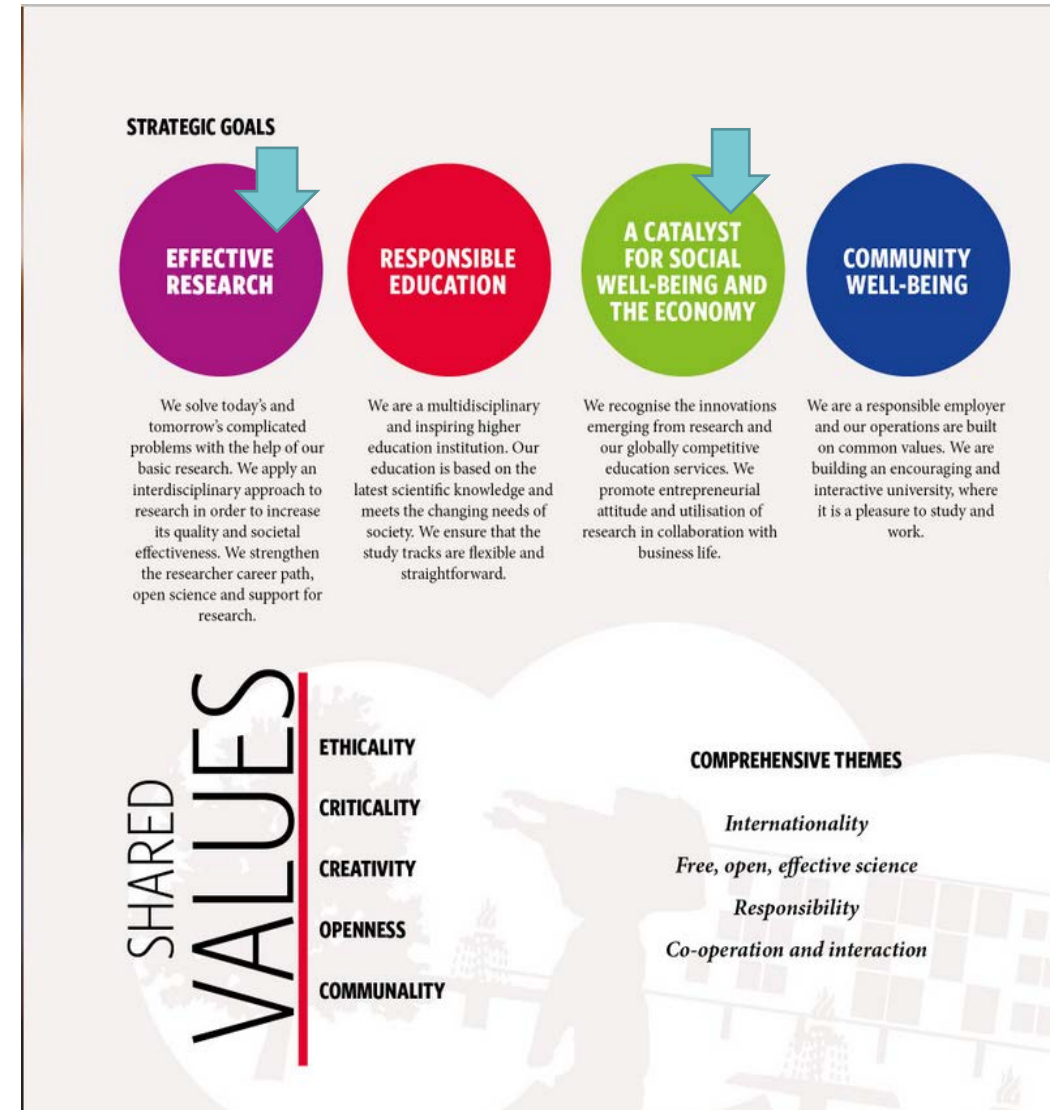


■ Basic funding (159 M€)

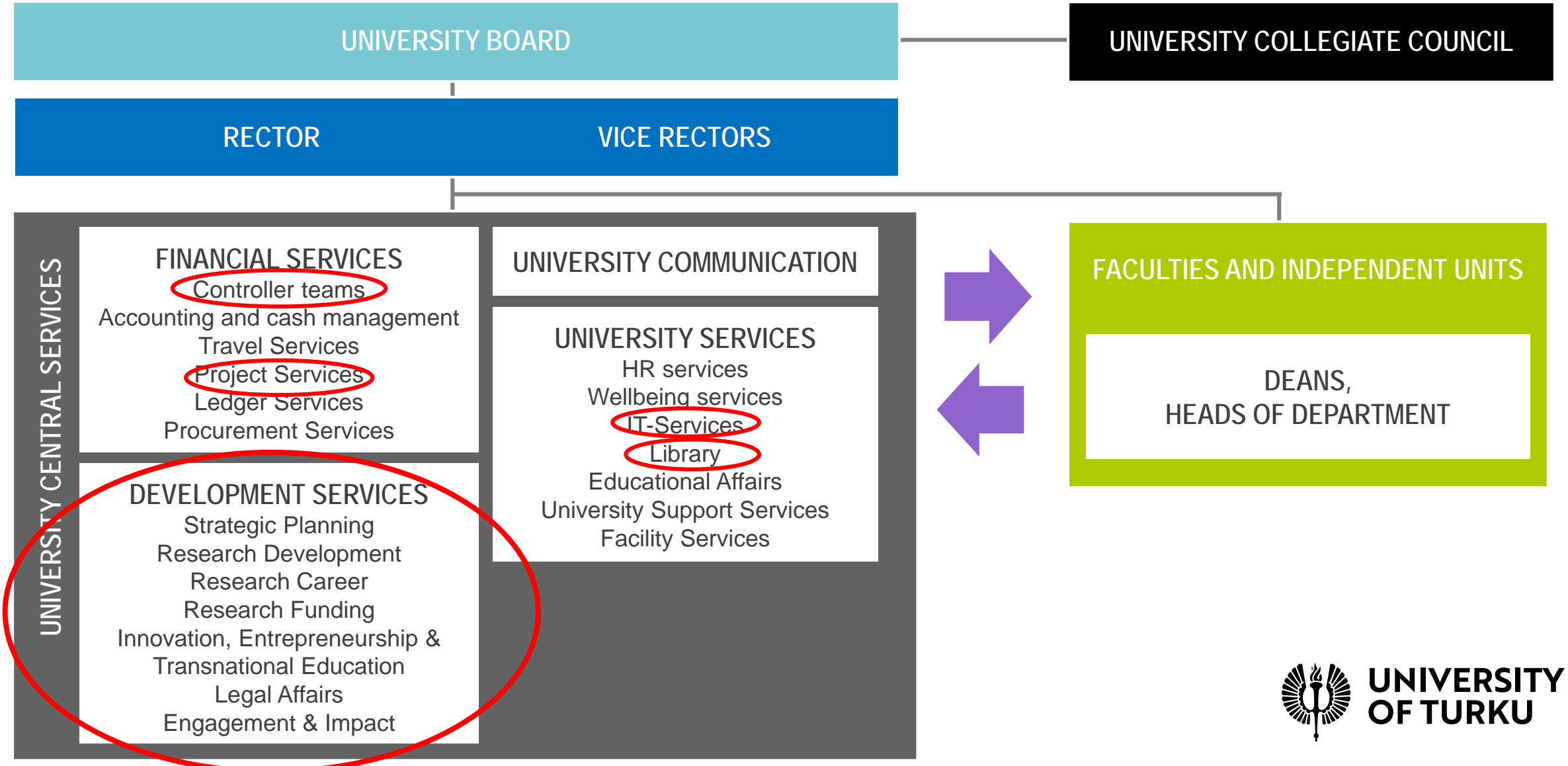
■ External funding (102 M€)

> [utu.fi/strategy](https://utu.fi/strategy)

# STRATEGY STEERING R&I ACTIVITIES & SERVICES



# ORGANISATION OF R&I SERVICES



# UTU R&I SUPPORT: DEVELOPMENT SERVICES

(incl. No of staff)

## Legal Affairs (7)

- Contract policies and risk management
- Contract advice (research, exploitation, HR, facilities)
- Juridical questions (IPR, GDPR, disputes)

## Research Funding (20)

- Pre award services
  - Funding opportunities and infos
  - Training (calls, grant writing)
  - Funding applications, checking and preparing
  - Internal funding for application preparation
  - Funder's IT systems
- Project coordination

## Engagement & Impact (9)

- Strategic partnerships and international cooperation
- Quality Audit, RAE, Rankings
- Alumni engagement
- Fund raising

## Research Development (12)

- Open Science, Research Infrastructures, Data, Research Ethics
- IT- systems for Research , CRIS, KPI's for research
- Strategic research projects

## Research Career (18)

- PhD studies and programs: support and preparations (Graduate School)
- Research collegium coordination
- PhD advisors and Young researcher's support

## Innovations, Entrepreneurship, Transnational Education (20)

- Identifying Inventions and innovations, invention process
- IPR-management ja commercialization
- Transnational education & Entrepreneurship



# UTU R&I SUPPORT: OTHER SERVICES

## HR Services

- International Staff Services (mobility: incoming/outgoing)
- Employment contracts, conditions and terms

## Financial Services

- Budgeting & follow up, forecasting
- Controlling
- Project reports

## Library

- Bibliometrics
- Publication services
- Open science
- Research guides

## Research IT Services

- IT solutions for research needs eg.
  - Programme development
  - Data management
  - Laboratory services

# 3 CAMPUS SERVICE CENTRES → 6 SERVICE POINTS

## LOWER CAMPUS SERVICE CENTRE

### EDUCARIUM SERVICE POINT

- Faculty of Social Sciences
- Faculty of Education

### TURKU SCHOOL OF ECONOMICS SERVICE POINT

- Faculty of Law
- Turku School of Economics

## UNIVERSITY HILL SERVICE CENTRE

### MAKASIINI SERVICE POINT

- Sciences and Engineering
- ESO Centre
- Centre for Languages
- University Central Services

### SIGNUM SERVICE POINT

- Faculty of Humanities

## KUPITAA SERVICE CENTRE

### MEDISIINA SERVICE POINT

- Faculty of Medicine
- PET Centre

### BIOCITY SERVICE POINT

- Turku Bioscience Centre
- Brahea Centre

- Financial (controller teams, eg.budgeting)
- HR services
- **Research Funding (pre award) services**
- **Research Career (graduate school) services**

### Other services located:

- near projects/researchers
- back offices





**UNIVERSITY  
OF TURKU**

**THANK YOU!**

**[soile.haverinen@utu.fi](mailto:soile.haverinen@utu.fi)**