

Degree Studies at UTU

Johanna Kärki

International Education Specialist

Admission Services

University of Turku



Degrees at the University of Turku

- Bachelor, Master and Doctoral degrees awarded.
- Bachelor level studies mainly in Finnish, Master and Doctoral also in English.
- All degrees follow the common European framework.
 - 60 credits equal one year of full-time study
 - Bachelor 180 credits
 - Master 120 credits
 - Doctoral degree 240 credits

Studying at UTU

- Versatile teaching methods.
 - Online courses, workshops, simulations and seminars as well as contacts with local and international companies.
- Excellent library and IT facilities.
- Student housing offered close to campus.
- Active student city
 - Free-time activities including, sports, culture, subject organisations and more.

Student life

- Student Union
- Sports, culture etc.
- Discounts
- Inexpensive meals
- Friends and future colleagues



International Master's Degree Programmes

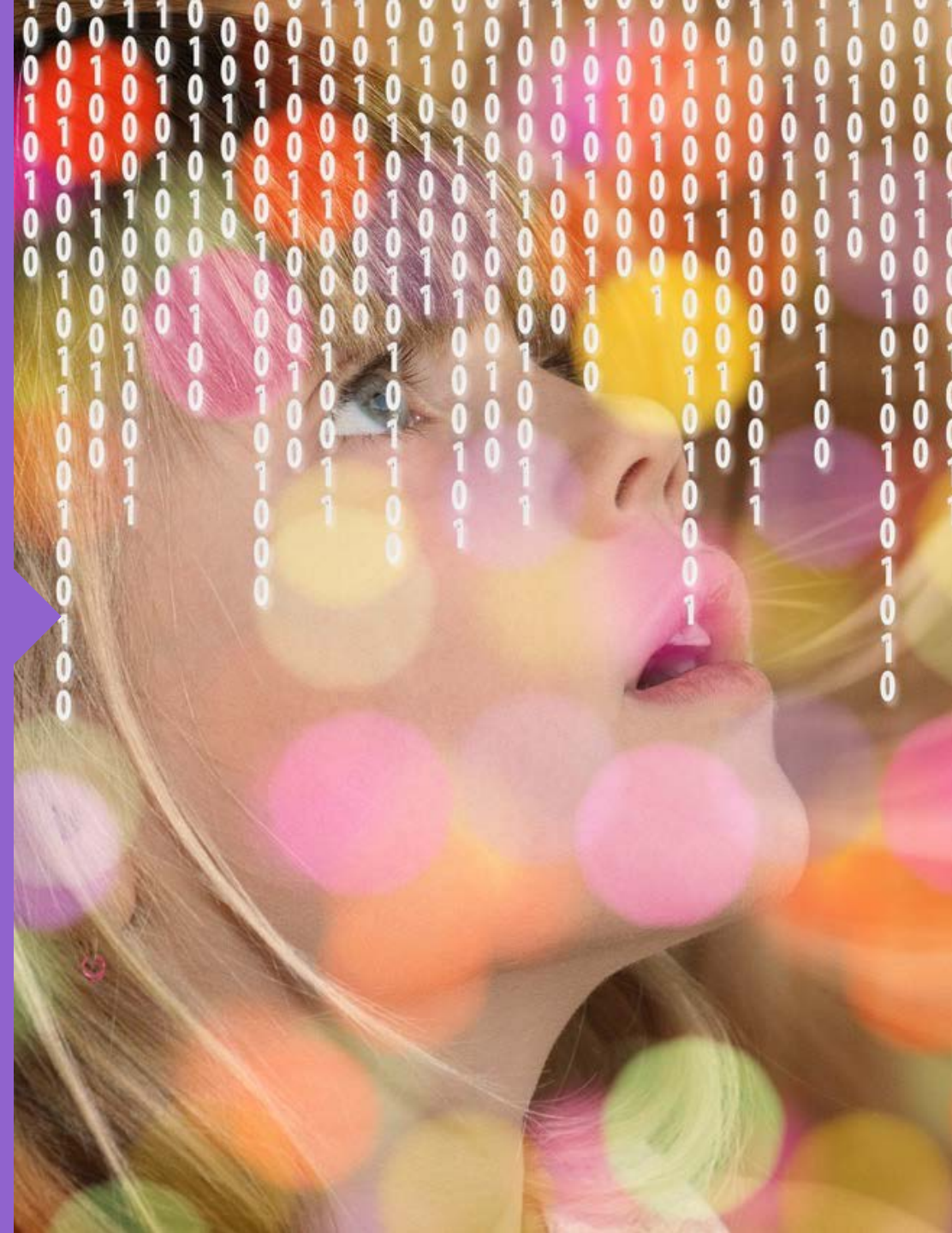
- High class education in core strength areas.
- Globally recognised Master's degrees.
- Multidisciplinary, research based programmes with strong focus on employability.
- 16 Master's programmes in a variety of fields.
 - In addition 8 double degrees with high quality partners.
 - 2 international Bachelor Programmes (from 2020).

International Master's Degree Programmes

- 120 credits, 2 years of studies including master's thesis.
- Core subject courses, methodology, minors and optional courses
 - Also cross-disciplinary opportunities.
 - Students are advised to find their own study paths within the programme structure.
- All students are encouraged to learn Finnish.
- Employability
 - Courses, workshops and case studies with local, national and international companies as well as extra curricular activities such as Boost Turku (startups etc.).

Case: Futures Studies

- Only programme in the Nordic countries – one of few globally.
- Run by Finland Futures Research Centre.
- Students gain unique expertise in foresight, sustainability and the ability to predict future changes.
- UNESCO chair in Learning Society and Futures of Education



MDP's in all Faculties - examples

- Faculty of Humanities
MPD in Nordic Cultural and Social Resilience
- Faculty of Science and Engineering
MDP in Food Development
- Faculty of Law
MDP in Law and Information Society
- Faculty of Medicine
MDP in Human Neuroscience
- Faculty of Social Sciences
MDP in East Asian Studies
- Faculty of Education
MDP in Education and Learning
- Turku School of Economics
MPD in Global Innovation Management

New Programmes in 2020 intake

- Faculty of Science and Engineering
 - MDP in Biosciences
 - MDP in Information and Communication Technology
- Faculty of Education
 - Primary Teacher Education (bachelor and master)
 - Early Childhood Teacher Education (bachelor)
- Faculty of Social Sciences
 - MDP in Inequalities, Interventions and New Welfare State
- Old and new programmes (bachelor and master), intake 465 for 2020.

Tuition Fees and Scholarships in MDP's

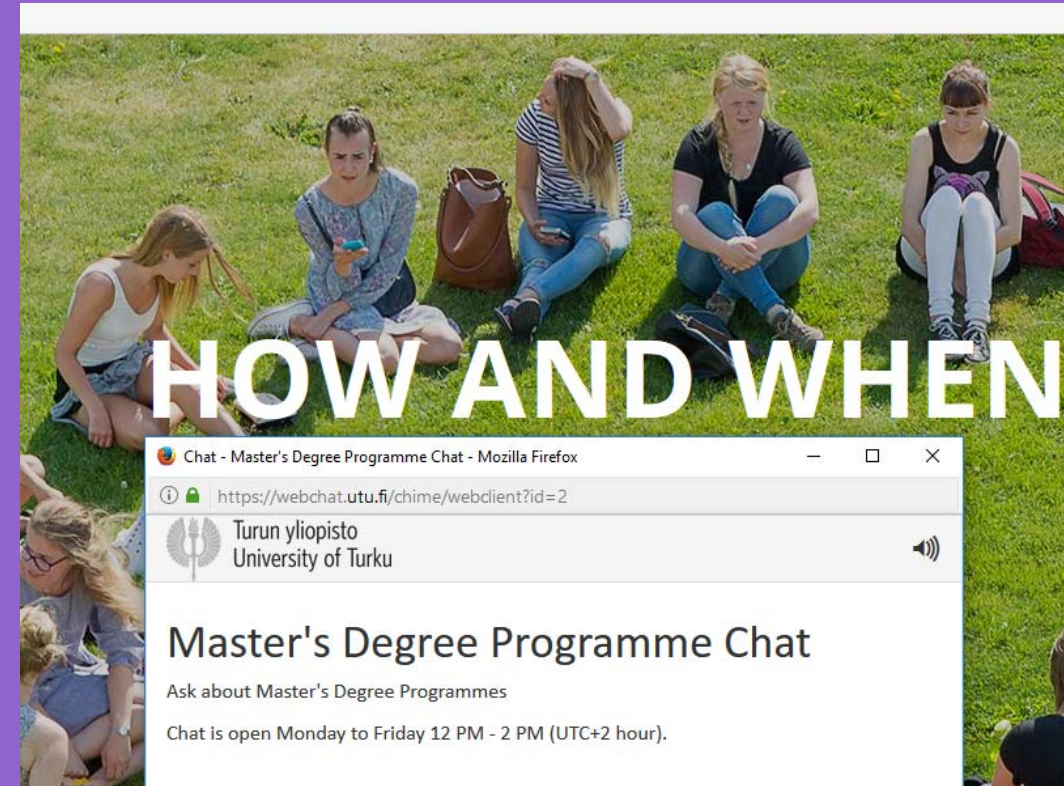
- Tuition fees range from 8000 euro to 16 000 euro annually.
 - No tuition fees for EU/EEA citizens.
- Tuition fee includes all teaching, tutoring, services and support of the university.
- Scholarships are awarded to the best applicants.
 - Covers tuition fully or partially, can be up to 32 000 euro.
 - Students can also apply for smaller grants and scholarships of the university.

Recruiting to MDP's

- Looking for the best match to our programmes.
 - Why is this a good fit for you?
 - Finding the most suitable students is a challenge.
- Recruiting globally, but focus on key markets.
 - Currently students from Finland, the EU and outside the EU.
- Online marketing and presence and using social media.
 - Programmes also have their own marketing e.g. through partnerships.
- Education agents.

masters.utu.fi

- For applicants
 - Programme descriptions
 - Admission criteria
 - Scholarships
-
- Guidance to prospects offered via e-mail, chat and in person if needed.



Using online Portals

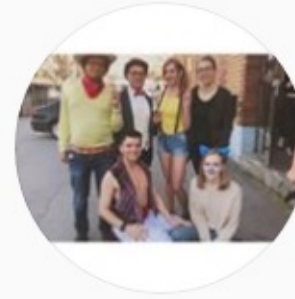
- Using commercial portals to boost knowledge of our University and programmes.
 - StudyPortals, Keystone (MasterStudies) and FindAMasters.
 - Using the larger resources of the portals – more visibility and targetted visibility.
- Lead generation.
 - Direct contact to the prospects.

Ambassadors, alumni etc.

- Word of mouth, testimonials, real experiences.
- Directly from student or alumni to prospect.
- What is it really like and what kind of employment opportunities are there.
- University and programme level actions.
- Each happy graduate is the best advertisement we can have!
 - Telling friends and family that UTU is a good place to be.

Ambassadors

- 14 international students.
 - USA, Finland, Vietnam, India, Iran, Latvia, China...
- Be the student face of the university.
 - Instagram, networking events, blogging.
- Learn more tomorrow!



#utuambassador

201 posts

Following

Top Posts



Admission to MDP's

- Relevant degree
 - Depends on programme.
- Language skills
 - Strong English skills (IELTS 6.5)
- Possible motivation letter, pre-assignment or other programme specific requirements.
- Application annually.
 - January for studies beginning in August/September.
 - Decisions made by the end of March.

Application

- We use the national studyinfo.fi portal.
- All documents are to be uploaded in PDF format.
- Applicants will receive offers at the latest 2 months after the admission period ends.
- Admission offer and scholarship offer at the same time.



Evaluation of application documents

1. Language skills.
 - IELTS, TOEFL, PTE etc. Or previous degree.
 - No exceptions are made.
2. Eligibility documentation.
 - Bachelor's degree from a nationally recognised institution.
 - Degree gives access to master level studies in the country it was issued in.
 - Possible to apply prior to graduation – conditional offer.
3. Academic assessment.
 - Relevance of previous studies, motivation letter, interview etc.

Applicants to MDP's (2019)

- MDP's received 1,376 applications from 94 countries
 - Number of applications in 2018 was 1,116.
- 67% of the applicants come from non-EU/EEA countries
 - Pakistan (100), Bangladesh (97), Nigeria (70), India (66), Iran (61), and Ghana (59).
 - Most applications from within the EU and EEA countries came from Finland (185).
- Most popular programmes: Global Innovation Management, Biomedical Sciences, Digital Health and Life Sciences, and Information Security and Cryptography.



Why choose UTU?

- A challenge as students often get multiple offers.
 - Making sure the students feel welcome even before they arrive!
 - Why are we the best choice for you?
- Information via e-mails, newsletters and personal contacts.
- Using Telegram to form online tutoring groups.
- Student tutors and ambassadors as fellow student contacts.

FUTURE *with* UTU

BUILD YOUR CAREER WITH US!



Are you ready to join UTU?

Are you looking for new opportunities? Or maybe you already know you will be joining us soon. Either way, we are confident that there is something in our offering that will interest you. Perhaps it is degree studies and exchanges or maybe you see our University as a future employer.

We welcome approximately 300 exchange students and 250 international master's degree students every autumn. We also offer internships, doctoral candidate positions and or non-degree studies as well as employment opportunities to academics from all over the world.

Click on the link below to read about the opportunities we offer and perhaps you will join our academic community in the near future.



Students at MDP's

- Annual intake ~400.
- 542 international students at Master level
 - 9% of all students.
- Largest student groups
 - China, Russia Pakistan, India, Iran, Nepal, Germany, Estonia.
 - In total over 100 nationalities.
 - Many Finnish student study in international programmes.

After Graduation

- Graduates with a master's can apply for Doctoral studies.
 - Can apply to any university in Finland or abroad.
 - No tuition fee in UTU for Doctoral candidates.
- Graduates can look for employment in Finland.
 - Option to apply for extension to residence permit.
- Finnish degrees recognised globally.
 - The world is open to our graduates.
- Graduates can become consultants or start their own businesses.



**UNIVERSITY
OF TURKU**

Thank You!

www.masters.utu.fi