

An aerial photograph of a city scene. A wide river flows through the center, with a bridge crossing it. Several small boats are moored along the left bank. The city is surrounded by lush green trees. In the background, a prominent church tower with a green roof stands out against the sky. Other buildings and a tall chimney are visible in the distance.

Studying at the
Faculties of
Science and
Technology

The Faculties of Science and Technology

The Faculty of Science

The Faculty was founded in 1920 and consists of five departments and one independent unit.

The Faculty of Technology

The Faculty of Technology is the newest faculty at the University of Turku and was established in the beginning of 2021. The Faculty consists of three departments.

Faculty of Science

Five departments and one independent unit

- Department of Biology, Natura
- Department of Chemistry, Aurum
- Department of Geography and Geology, Natura and Geohouse
- Department of Physics and Astronomy, Quantum
- Department of Mathematics and Statistics, Quantum
- Biodiversity Unit, Natura



Faculty of Science

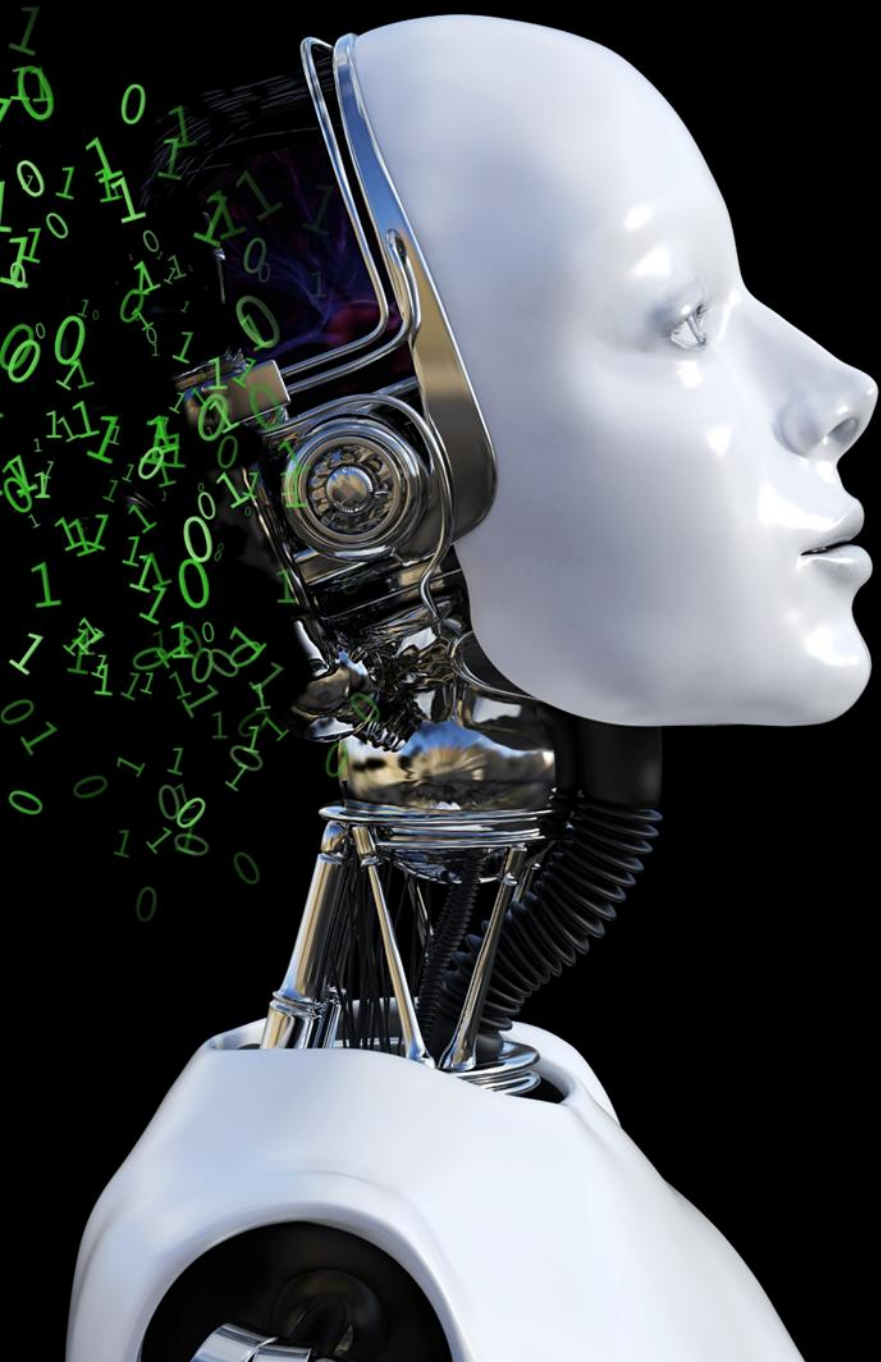
International Master's Degree Programmes in

Biosciences

- Evolutionary Biology
- Molecular Systems Biology

Exact Sciences

- Astronomy and Space Physics
- Chemistry of Drug Development
- Chemistry of Materials for Sustainable Development
- Materials Physics
- Mathematics and Statistics
- Theoretical Physics



Faculty of Technology

Three departments

- Department of Computing, Agora
- Department of Life Technologies, Medisiina D, BioCity, PharmaCity
- Department of Mechanical and Materials Engineering, Agora, ICTCity, Quantum

Faculty of Technology

International Master's Degree Programmes in

Biosciences

- Molecular Systems Biology

Food Development

Health Technology

Information and Communication Technology

- Cryptography
- Cyber Security
- Data Analytics
- Robotics and Autonomous Systems
- Software Engineering

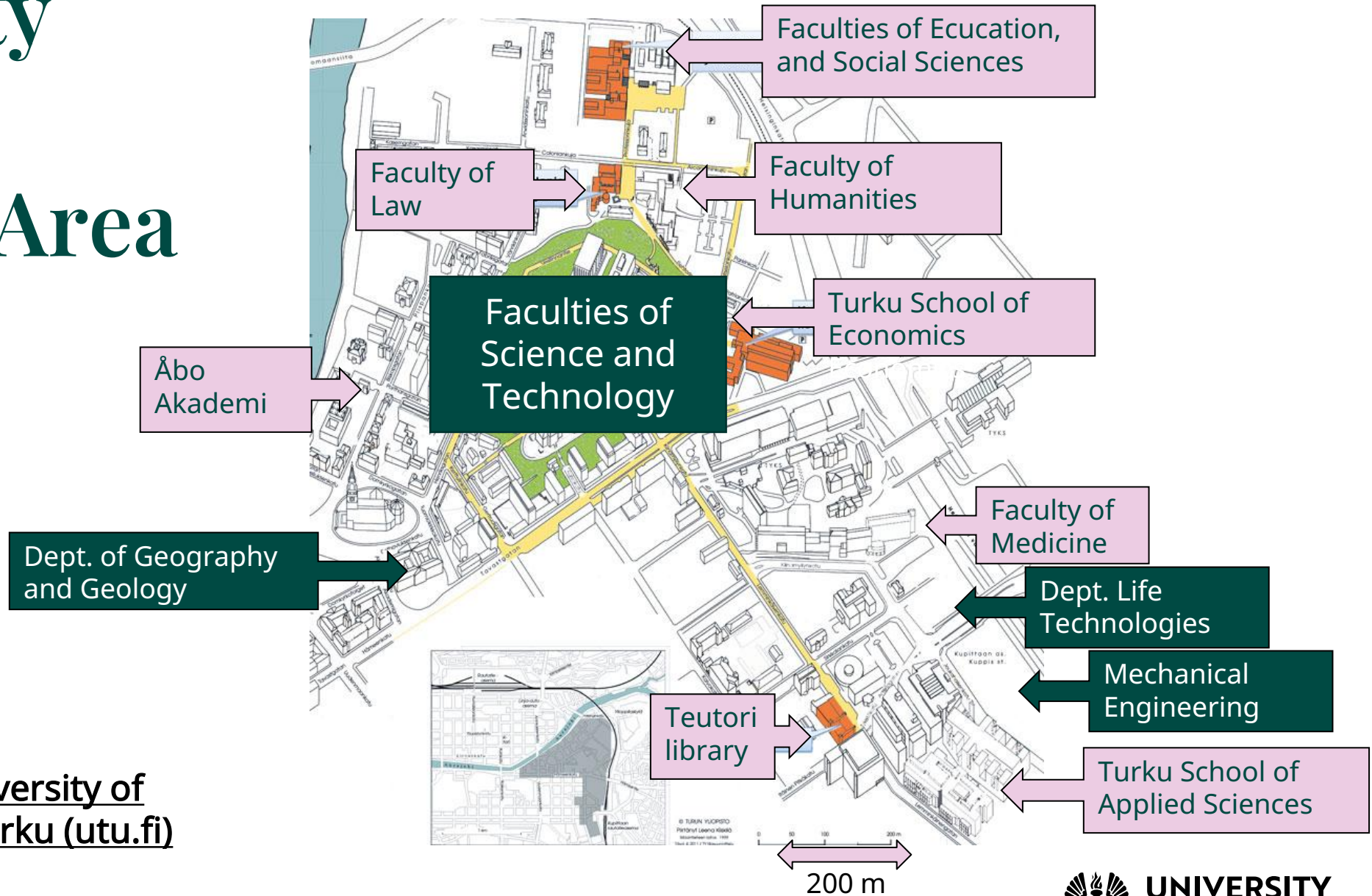
Materials Engineering

- Health Technology Materials
- Materials of Energy Technology
- Modern Industrial Materials

Mechanical Engineering

- Digital Design
- Digital Manufacturing
- Smart Systems

University of Turku Campus Area



Lecture Halls at the University of
Turku | University of Turku (utu.fi)

Tuudo

- The Tuudo app for students can be downloaded free of charge from app stores.
- Tuudo includes student card, library card, schedule, lunch menu, campus map.. among other things.
- Using Tuudo is voluntary and you can log off anytime.
- <https://www.tuudo.fi/en/>

Study Guides, Courses & Teaching Schedules



Teaching periods 2025–2026

Faculty of Science

- I September 2 – October 26
- II October 27 – December 21
- III January 12 – March 8
- IV March 9 – May 3
- V May 4 – June 18

Faculty of Technology

- I August 1 – October 26 (teaching starts mainly from September 1)
- II October 27 – December 21
- III January 2 – March 15
- IV March 16 – May 24

- Summer period 25.5.2026 – 31.7.2026

Peppi Study System

Peppi includes

- Student's Desktop
- Study Guides and Teaching Schedules
- Enrollments for the courses and the exams
- The detailed instructions can be found on intranet



Peppi – the study register

<https://student.peppi.utu.fi>

Peppi - Student Desktop

Welcome to Peppi Student's desktop!

You can print a transcript of records in your Personal Study Plan (PSP), by clicking the Download transcript (PDF) button in the Overview tab and your study certificate in the top row of this page. If you need an official transcript or study certificate, please contact the office of your faculty or department.

If you have questions about your completed studies or PSP, please contact the office of your faculty or department. (<https://intranet.utu.fi/index/study-guidande-in-faculties/Pages/default.aspx>).

For more information about using the service, please visit https://intranet.utu.fi/index/peppi_students/Pages/default.aspx.



PSP – Personal study plan

PSP is your own study plan. Plan, schedule and edit your PSP.



Course enrolment

Enrol to courses you have planned (does not concern open university students).



Study guide

Study guide.



Transcript of records

See completed and failed courses and credits.



Exam

Exam - electronic exam service



Semester enrolment

Enrol to your study right as attending or non-attending in Oili registration service. Enrolment periods 1 Jun - 31 Aug and 1 Dec - 15 Jan. Current enrolment status is visible in Peppi!



Timetables

Check and plan your own schedule.



Personal details

View and update your personal details. You can print a study certificate in the top row of this page.

Course Enrolment

Enrollment for the courses is done in **Peppi**.

- Remember to check the enrollment period for each course
- Enroll on time
- *The grade can be registered only if you have enrolled for the course in Peppi*

NB! Having courses in your Learning Agreement is not the same as having enrolled in courses!

Study Guides and Teaching Schedules

<https://opas.peppi.utu.fi/en/courses-for-exchange-students/24345?period=2024-2027>

- Courses for Exchange students
- Faculty of Science / Technology
- Choose the right department

- Also the possibility to search courses by the name or the course code

Study Guides include:

- Course descriptions
- Teachers
- Teaching schedules (on the course page click the blue box for detailed information)
- Enrollment period

Courses in the Moodle system

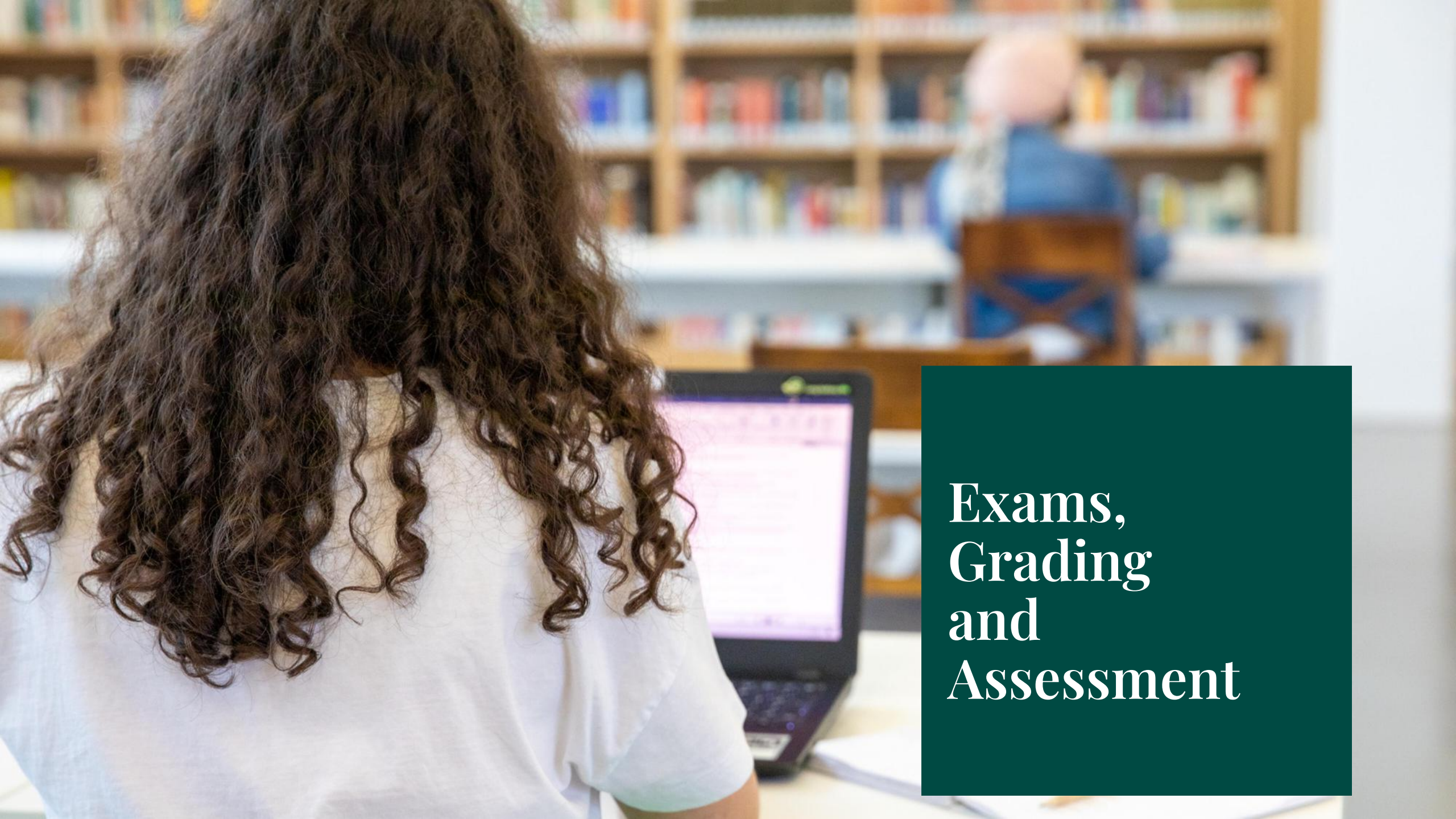
Most teachers at our faculties use Moodle to share lecture materials and keep in contact with the students.

➤ moodle.utu.fi → Search courses by the name or code

A course password might be needed. The teacher will inform you about it during the first lecture or by e-mail, or you will find information about the password in Moodle.

Introductory course "*Moodle for students*" for practising Moodle!

Remember to check your utu e-mail regularly for additional information and notices concerning the courses. Remember to check the junk mail folder too!



Exams, Grading and Assessment

Ethics in Studies

- As a student it is your responsibility to follow the instructions of good scientific practice in studies when it comes to e.g., writing essays, taking exams and other coursework.
- Typical violations of ethical guidelines are plagiarism, falsification, ignoring the exam rules and misuse of artificial intelligence.
- If you use AI in an assignment, you must disclose the way in which AI has been used.
- All cheating attempts are strictly forbidden and reported to your home university

Further information on Ethics and using AI on intranet:

- [Faculty of Science](#) / [Faculty of Technology](#)



Exams and other study methods

- Exams can be arranged in several ways such as
 - in a lecture hall
 - especially mathematics, physics, geology, mechanical engineering, biotechnology and biochemistry
 - in Exam system
 - in Moodle
 - in ViLLE system
 - as a home exam
- You are allowed to take the exam for each course three times
- You can take part in the exam if you want to improve your previous course grade
- The exams are usually taken at the end of the teaching period
- The exam questions are different on each exam

The course can also be completed e.g., by writing an essay, doing a project work, group work or lab work.

Exam enrolment

- Check the type of the exam (electronic, lecture hall, Moodle...) from the Study Guide or the course teacher
- You will be informed of the exam dates or the period for taking the electronic exam in the beginning of the course by the teacher.
- Enrol as advised
 - in Exam or other electronic system
 - in Peppi (lecture hall exams)
 - in some cases, directly to the teacher

Late registrations are not accepted (especially the exams in the lecture halls)

Electronic exams

Electronic exams are taken on a computer in the E-exam rooms

- Agora
 - Aurum
 - Educarium
 - Publicum
 - Teutori
 - Turku School of Economics.
-
- Exam <https://exam.utu.fi>
 - Student instructions <https://utuguides.fi/examstudents>
 - Contact information: exam@utu.fi
-
- Various exam dates throughout the academic year.
 - Read the instructions and make a reservation before taking the exam.
 - **Electronic exams are supervised – no cheating!**

Exam behaviour in the lecture hall

- Be on time! No entrance 30 minutes after the examination has begun. You can leave the lecture hall after 30 minutes has passed.
- **Take along a pen and your ID.**
 - No books, dictionaries, notes, calculators or other materials unless otherwise instructed.
 - Turn off your mobile phone and **leave it in your bag.**
 - Bags and overcoats should be left at the end or sides of the hall.
- Write your name, study right number and name of the course on each paper sheet. The exam papers are provided by the faculty – you are not allowed to use your own papers.

Exam behaviour in the lecture hall

- **No talking or copying!**
- If you need anything, raise your hand.
- Return the examination to the exam supervisor, even if you have not answered anything.
- Show your ID when you return the papers.

More information on the exams:

- [Faculty of Science](#) / [Faculty of Technology](#)

Ethical guidelines for learning:

<https://www.utu.fi/en/guideline-for-misconduct-in-studies-at-the-university-of-turku>



Grading and assessment

- Grading scales:
 - 0 - 5 (0 = fail, 5 = best grade)
 - pass / fail
- Grading scale is stated in the course description on the Study Guide.
 - NB! If the grading scale of the course is pass/fail, the scale **cannot be changed** into the numerical scale.
- The results of the examinations and other academic achievements are available in Peppi.
- The examinations and courses must be evaluated, and the results must be published and delivered to the system within **three weeks** of completing the course or examination.

Grading and assessment

- Failed courses are not listed in the transcript of records.
- Registered grades can't be removed from your transcript of records
- If you have taken several exams for the course, the best grade will be shown in the register.
- Return the course work by the given deadlines
- Your study right expires at the end of the semester and the grades for the courses need to be registered by July 31 at the latest.





Who to
contact?

Faculty Office for Academic and Student Affairs

- Natura, 1 floor
- Open on Wednesdays 1 - 3 p.m.
and by appointment
- Study Advisors Maria, Beata,
Juhani, Kirsi and Karolina
- Education Coordinators
- Student Services Secretaries
- Head of Academic and Student
Affairs Annina Laakso

CONTACT INFORMATION

Faculty of Science

Faculty of Technology

Who to contact?

In common questions concerning studies in the Faculty?

Study Advisors: oposci@utu.fi (Faculty of Science) / opotech@utu.fi (Faculty of Technology)

Regarding the exams and the study attainments?

Study Services Secretaries: opintosihteerit-scitech@utu.fi

Regarding the teaching schedules? Education Coordinators: infoscitech@utu.fi

In practical matters? Your student tutor

In questions related to your mobility?

International Office: incoming@utu.fi

Service desk in Student Centre Disco, Natura 2. floor

Who to contact?

The teacher of the course can help you e.g. in these situations:

- You want to cancel your participation on a course, or you want to take a course that you have not enrolled in
- The courses that you have selected are held at the same time - ask the teachers for possible optional ways of completion, maybe it is possible to take them both
- When you want to know more about the content of the course
- The grade of the completed course has not been registered for you (within three weeks)

The contact information for the teachers can be found on the utu web page:

<https://www.utu.fi/en/search-people>