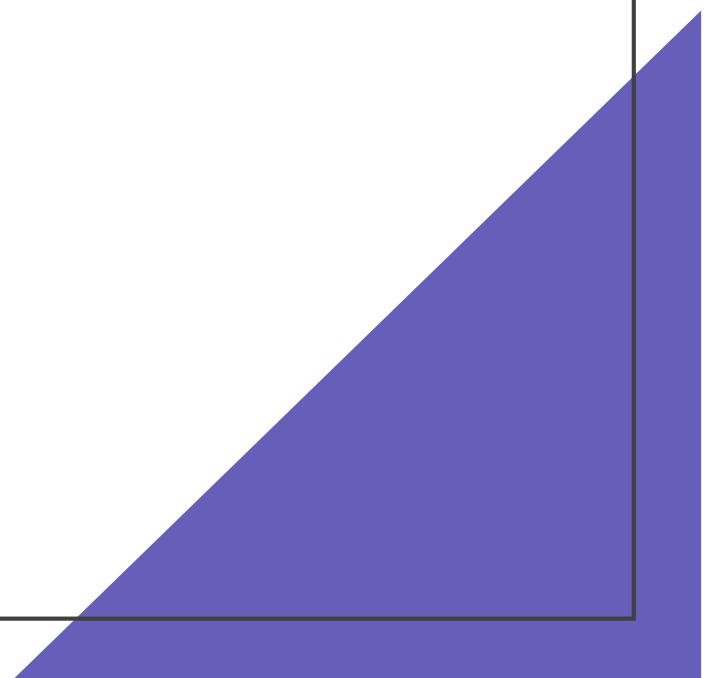


# Centre for Language and Communication Studies

Anna Väre

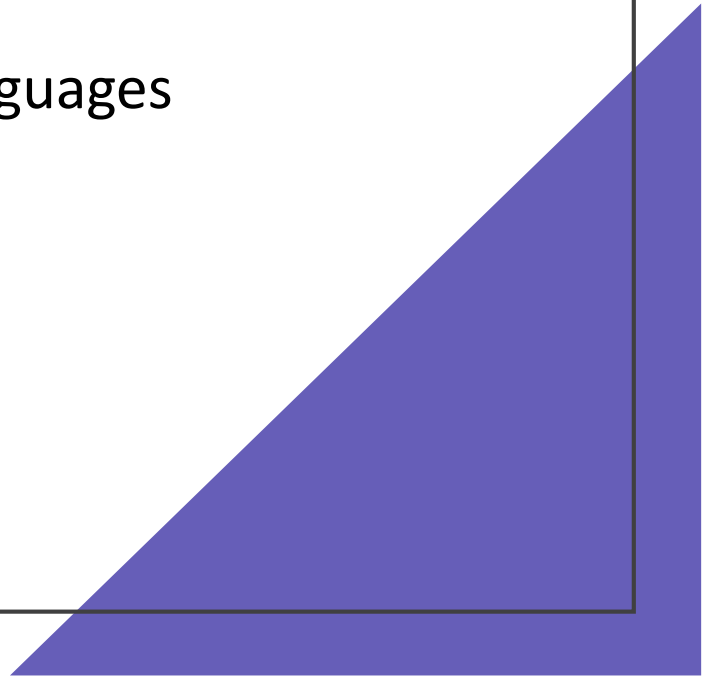
Head of Academic and Student Affairs

([kievi@utu.fi](mailto:kievi@utu.fi))



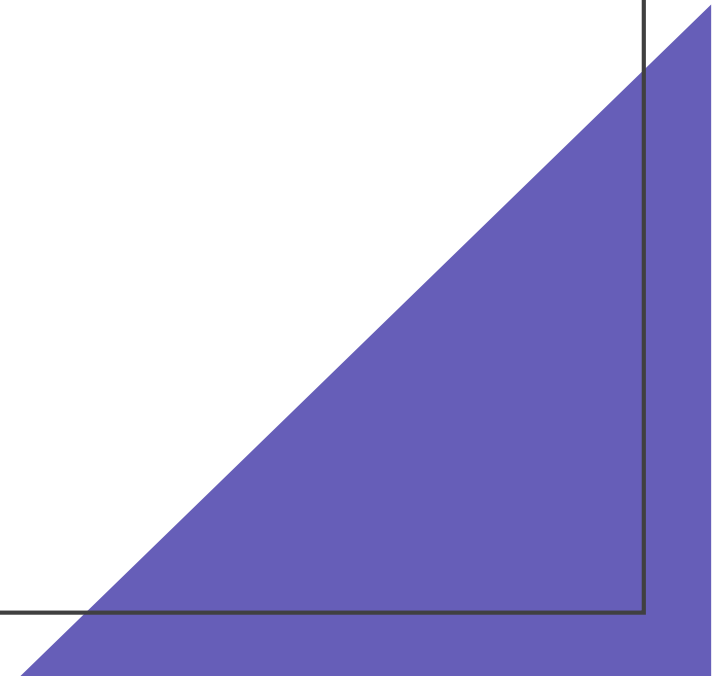
# CeLCS

- What is CeLCS
- Language studies for international master programmes
- Enrolment for courses
- Other ways to study languages
  - Language Tandem
  - Language Partner
  - Language Circles



# Centre for Language and Communication Studies

- An autonomous institution in University of Turku, offers teaching for all Faculties
- 47 000 students per year, 11 different languages!
- Obligatory faculty-specific courses for degree students
- Optional language courses for all students



# Contact information



Email and phone

[kievi@utu.fi](mailto:kievi@utu.fi)

+358 29 450 2018



Location

Agora building, 2nd floor



Instructions

[Intranet page](#)

# Obligatory language studies for master's degree students

- Master's programmes have different language study requirements
  - Check the specific requirements of your study programme from your programme coordinator or [from the study guide](#)
- Most students are required to complete the **Finnish Intensive Beginners' Course** (5 ECTS)
  - enrolment open until 8 Sept at 08:00 am
- Some are also required to take an **English Academic Writing Course** (2-3 ECTS)
  - enrolment open until 31 Aug at 12:00
  - one group open until 26 Sept at 12:00

# English language courses

**KIEN2026 Online English: Academic Writing Skills, 2 ECTS**

and

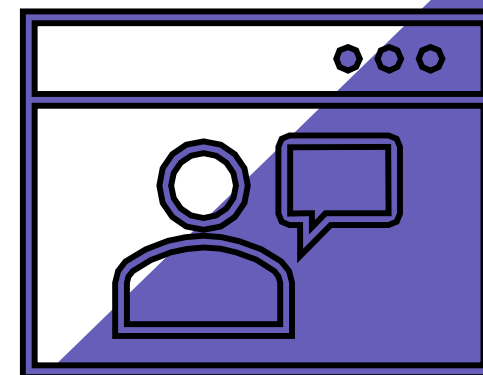
**KIEN2024 English: Academic Writing Skills, 2 op**

are parallel courses, you can choose only one.

**KIEN3021 English Language Support for Thesis Writing, 2 op**

- East Asian Studies
- Education and Learning
- Inequalities, Interventions and a New Welfare State
- Nordic Cultural and Social Resilience

**→NOT for first-year MA students** because students must be **actively writing** their thesis during the course time



# Finnish as a Foreign Language

- [KIFF0003 Finnish Intensive Beginners' Course I](#), 5 erts
  - 4 groups in autumn, more groups in the spring.
  - Groups 1 and 3 have the same schedule
  - Groups 2 and 4 have the same schedule
- [KIFF0001 Finnish Beginners' Course I](#) 4 erts
  - Groups 1-3, (Group 4 is only for doctoral researchers)

Make sure you enrol to the right group!

# Substitution of studies

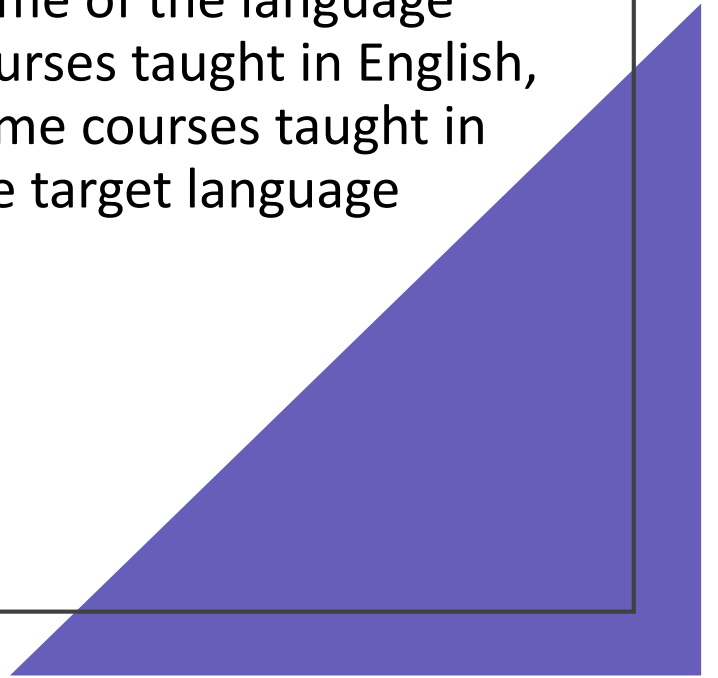
It is possible to substitute compulsory courses with corresponding studies completed in another institution

You need to fill the electronic [application form](#)

Attach a copy of your transcript or a study certificate to your application

# Language studies at CeLCS

- Chinese
  - English
  - French
  - German
  - Italian
  - Finnish as a Foreign language
  - Spanish
  - Swedish
  - Russian
- Different levels: beginners', continuation and more advanced courses.
  - Some of the language courses taught in English, some courses taught in the target language

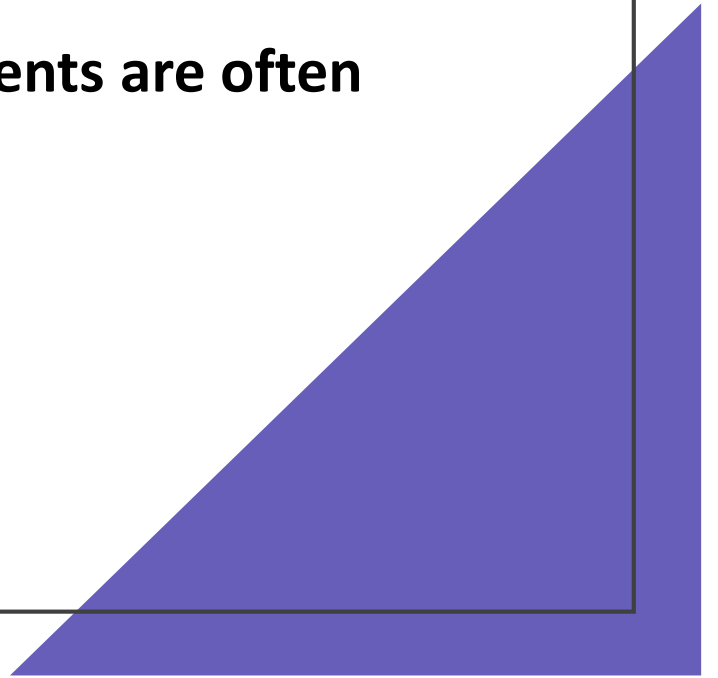


# Find information about the courses in the [Study Guide](#)

Course descriptions, teaching times, enrolment time, teachers' names etc.

# Enrolment to courses

- Enrolment for all courses is done in Peppi system or with Tuudo app
- Check the enrolment period from the course description.
- **There are different selection systems for courses, students are often selected by lottery if the course is too full.**



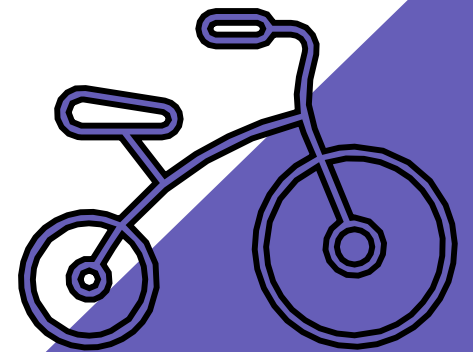
# Other ways to study languages

- Language and culture tandem
- Language circles
- Language tutoring
- Language partner



# Language and Culture Tandem 2 ECTS

- Students work in pairs and teach their own native language to each other.
- The other target language has to be always **Finnish** and the other can be **Chinese, English, French, German, Italian, Russian, Spanish or Ukrainian**.
- Find the enrolment link in the [course description](#)
- **Enrolment deadline 10 September**



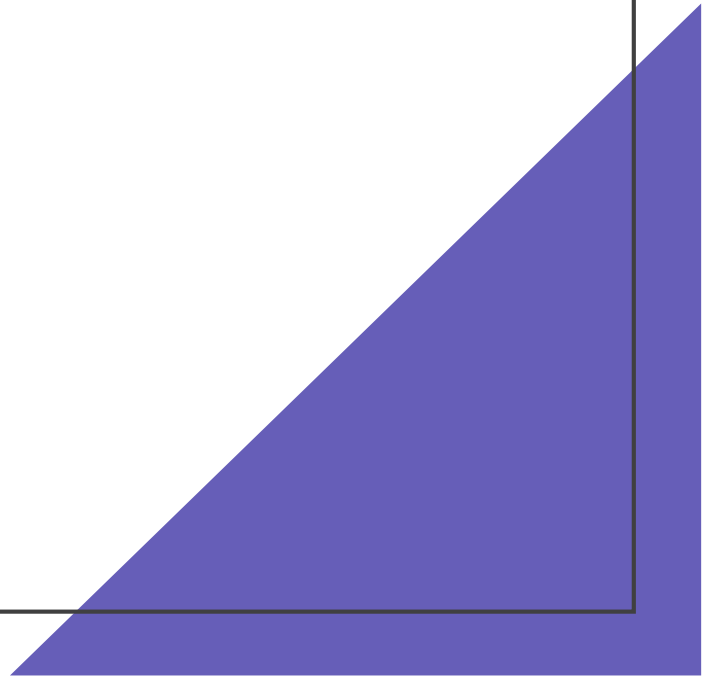
# Language Circles

- Language circle is a voluntary, free time activity carried out by international and Finnish students and staff.
- Groups are available in different languages, and the idea is to use that specific language in the group. It is completely up to the group members to decide what they want to do in their group.

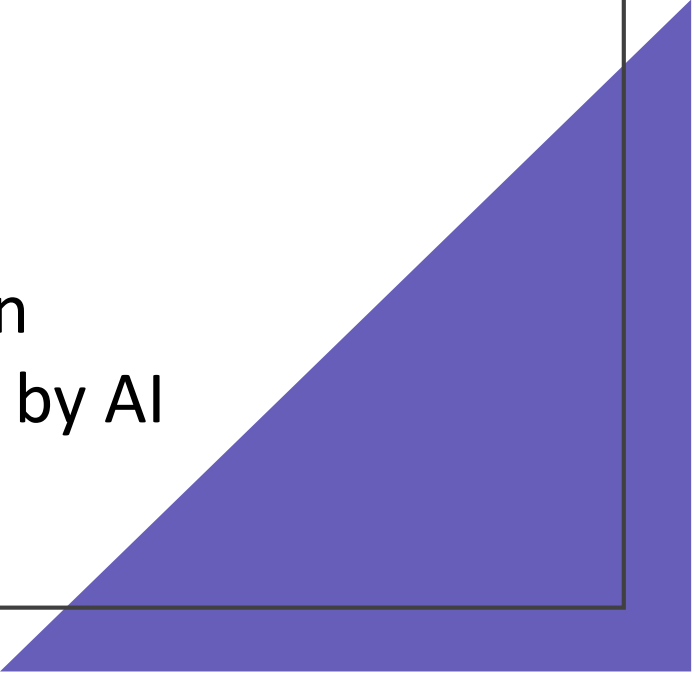
Welcome to the Language Circles kick-off meeting!  
**Thursday 14 September**  
**at 16.15.** (Room XX, Agora building)

# Language partner

- If you don't want to take a course or if you want to study some language with another student, it is possible to find a language partner and practice your language skills without any academic objectives.
- [Check the instructions and sign in to Moodle](#)



# Important to know: [FairUTU](#)

- Basic ethical values
  - Ethical guidelines for learning
  - Plagiarism
  - Misconduct and Fraud at UTU
  - Authenticity of theses and research plans
  - Support for teaching and publishing with Turnitin
  - Authorship and verifiability in content produced by AI
- 

# Kiitos!

[kievi@utu.fi](mailto:kievi@utu.fi)

[anna.vare@utu.fi](mailto:anna.vare@utu.fi)

[CeLCS intranet](#)

[CeLCS webpage](#)

Instagram: [utukievi](#)